

March 20, 2009

**MEMO**

#406

**TO:** All Muncie Master Warehouse  
All Muncie Divisions  
All Muncie Sales Personnel

**FROM:** Rick Wallace

**SUBJECT:** PTO Update

---

**Adapter FULL-49**

Engineering has released the 40TF7068 adapter for the Eaton medium duty transmissions found on FULL-49.

The adapter will change PTO output rotation and may help with clearance issues around the PTO opening. The adapter has a cluster gear, but it also offsets the PTO rearward which means a change in assembly arrangement is not necessary. The adapter will require the use of an U68 or U60 gear pitch. On the CS6 series PTO this will allow for more speed ratio output options than the standard F70 input gear option.

The adapter will require the use of two spacers to obtain proper gear engagement. The 23M62000 (2" spacer) and 23M60140S (.140" spacer) are included in the adapter kit.

The BOM is as follows:

40TF7068	Adapter
20TK4866	Stud Kit
23M62000	Spacer
23M60140S	Spacer
52TK4464	Gasket kit & Instructions

The service parts are similar to the 40TF6368 and include:

05T40298	Adapter Gear (New)
41T35415	Adapter Body

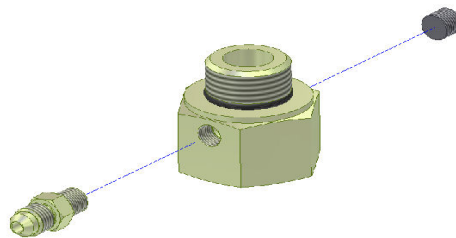
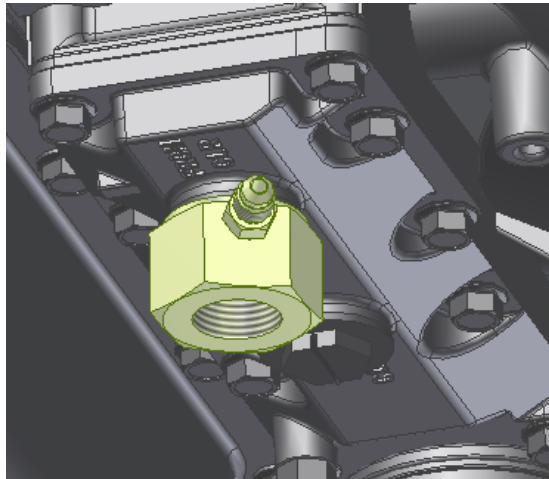
**Allison 1000/2000 Tee Fitting**

A new Tee fitting kit has been released by Muncie, 43TK5157. This kit will replace the fitting 43M78970 used to adapt to the lubrication of the PTO on the Allison 1000/2000 with the -12 ( $\frac{3}{4}$ " port. The new fitting kit has a Tee which is approximately 1" tall unlike the current 2 3/8' height (43M78970). Reducing this height has helped with the installation of the lubrication line without having to cut steel tubing.

The 43M78970 is the only tee being replaced at this time, so if you have the smaller port (-10 on 43M78840) as found on some 1000 series models you will need to use the 43M78840 fitting or compression kits 43TK4497 (-10), 43TK4505 (-12), or 43TK4606 (15mm) which you have used in the past.

**NOTE: This new kit will not work on the GM version of this transmission found on the light duty 3500 chassis.** However, many medium duty chassis (including the GM C/K 4500 & 5500) will benefit from using this new kit over the 43M78970 that you were using in the past.

The fitting used in the 43TK5157 will require one port plugged and the kit includes a plug and JIC fitting to use with the lubrication line supplied with the PTO.



**Obsolete SG-H65**

Muncie Engineering would like to inform you that the H65 designated input gear, 02T27326 and its corresponding output shaft 06T96479 for the SG Series, are now obsolete. Please mark these parts obsolete in your service parts listing SP86-05 and mark the SG6\*-H6510-\*1AX, single gear PTO as "NO LONGER AVAILABLE" in your QR application page INTL-1 and INTL-2 (Left Side Opening). The TG-H65 series PTO is still available for these obsolete International transmissions.